

THANK YOU!

Tournament Chair — Tony Ferguson, Penticton BC
Director-In-Charge — Matt Smith, Victoria BC

Tournament Directors

John Ashton, Portland OR

Dianne Barton-Paine, San Francisco CA

Steve Bates, Edmonton AB

Richard Dunn, Delta BC

Michael Farebrother, Calgary AB

John Gram, Salem OR

Duane Herzig, Brier WA

Claire Jones, Regina SK

Matt Koltnow, Redmond WA

Vince Lambert, Edmonton AB

Linda Marinus, Courtenay BC

Roger Putnam, Redmond WA

Doug Rankin, Regina SK

Brian Russell, Burnaby BC

Martin Ware, Vernon BC

Hospitality Chair *Eileen Currier* and all of the Hospitality Desk Volunteers

The "Signs And Posters" team for some great work

Caddies (organized by *Reg Pearce*)

Shirley Cox and all of the Partnership Desk Volunteers

Penticton Trade & Convention Centre Staff

Colleen Hodge and the folks at *Penticton Commercial Printing / Copy Cats*

All of our wonderful tournament sponsors and door prize contributors

See you next year! June 15-21, 2009

(Don't forget to pick up the full-colour 2009 flyer!)

Bridge by the Beach

Sunday Edition

Bridge by the Beach is the Daily Bulletin of the **2008 Penticton Regional** — Canada's biggest Regional every year since 2003.



Bridge by the Beach editor:

Bruce McIntyre (Burnaby BC)

e-mail: ooga@shaw.ca

I welcome news, stories, photos, interesting deals, and other material for *Bridge by the Beach*, and I'll print as much as I can—from experts, intermediates and novices alike. I will be available for digital photos of overall winners of any event, or

any bracket or strat within an event, both before the afternoon session and again after the evening session, at the Bulletin office near the northeast entrance (the one on the pairs side of the room).

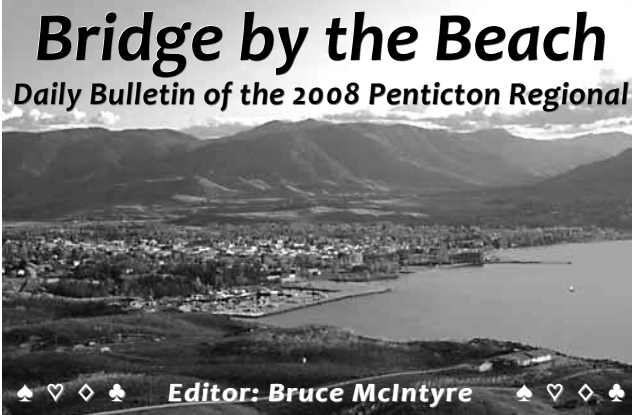
Each edition of *Bridge by the Beach* (and other recent McBruce Daily Bulletins) is posted online early each morning to this address:

www.matchpointer.com/db.htm

Photos taken for *Bridge by the Beach* are uploaded to the London Drugs Photo Station:

www.londondrugs.com/LDPS

Anyone can view them, download them, or purchase high-quality prints or even gift items with the photos. (The Penticton London Drugs, or any photo shop could do this for you if you have no Internet access.) No login is required; to access the photos, enter this access code: **ZLJ2KXTK7**



Today's Schedule

Sunday, June 15, 2008

MORNING/AFTERNOON EVENTS: 9:00 AM, TBA

StratiFlighted Swiss Teams,

Flight A/X(3000+ / 0-3000)

StratiFlighted Swiss,

Flight B/C/D (1000-1500 / 500-1000 / 0-500)

Stratified Senior Swiss Teams (1500+ / 500-1500 / 0-500)

Stratified Fast Open Pairs ... (1500+ / 500-1500 / 0-500)

MORNING SINGLE-SESSION EVENT: 9:00 AM

Stratified 199er Swiss Teams .. (100-200 / 50-100 / 0-50)

AFTERNOON SINGLE-SESSION EVENT: 1:30 PM

Stratified 199er Swiss Teams .. (100-200 / 50-100 / 0-50)

Single session entries accepted for the pair game.

StratiFlighted and Senior Swiss Teams strats are based on team average masterpoints.

199er Swiss Teams strats are based on the level of the highest team member.

All entries today will be sold inside.

Estimated on-the-road time: 5:00pm in the Swiss Teams, earlier in the Fast Pairs. **Drive safely!**

Watch for the wrap-up issue of *Bridge By The Beach* late tonight at

www.matchpointer.com/db.htm

It will include all Sunday results and complete masterpoint lists, including an alphabetical list of all masterpoint winners (red and gold points).

Brain Warmups

Five new kinds of puzzles!

More in our series of puzzles from a wonderful free collection of no less than 27 small programs that you can get at this address:

www.chiark.greenend.org.uk/~sgtatham/puzzles/

You'll be able to solve all of these puzzles **without guesswork**, by logical deductions alone. (Isn't that what we're all trying to do at the table? Why take a finesse when you have a 100% line?)

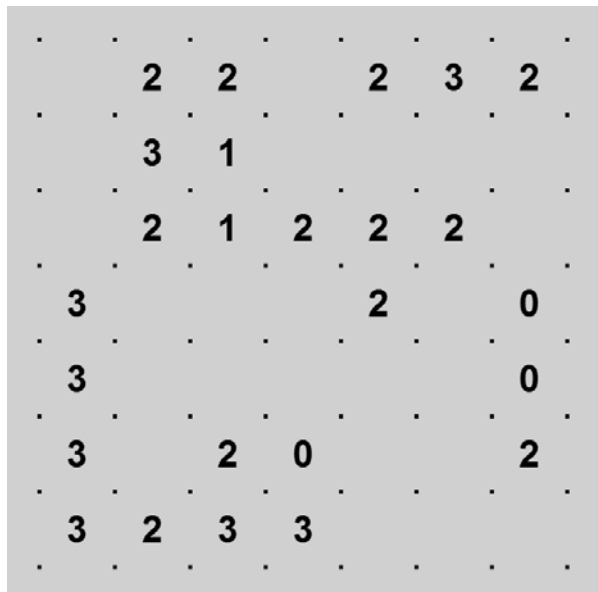
Today's puzzle is called **Loopy**. You start with a grid of dots. Your aim is to draw a single unbroken loop from dot to dot within the grid.

Some of the square spaces between the dots contain numbers. These numbers indicate how many of the four edges of that square are part of the loop.

Other squares contain no hints and may contain any number of edges as part of the loop.

The loop you draw must correctly satisfy all of these clues to be considered a correct solution.

The easy version is below. Hints on solving and a more difficult version is on page 23. Answers will appear in the online Wrapup issue. (Yesterday's puzzles: answers, page 23.)



Loopy Hints

Beginner's puzzle on page 2

Loopy Recap: Start with a grid of dots.

Your aim is to draw a single unbroken loop from dot to dot within the grid.

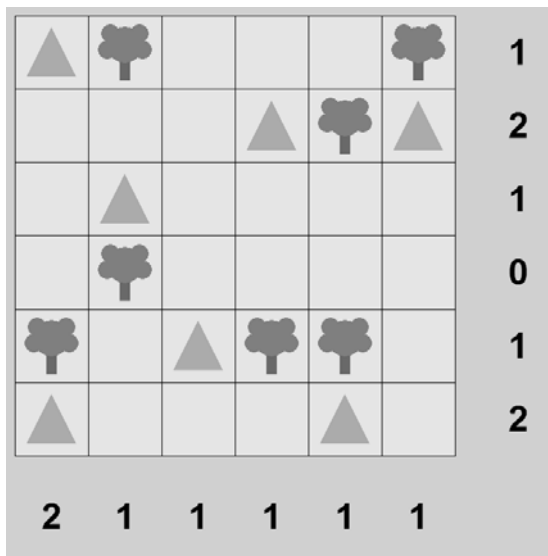
Some of the square spaces between the dots contain numbers. These numbers indicate how many of the four edges of that square are part of the loop.

Other squares contain no hints and may contain any number of edges as part of the loop.

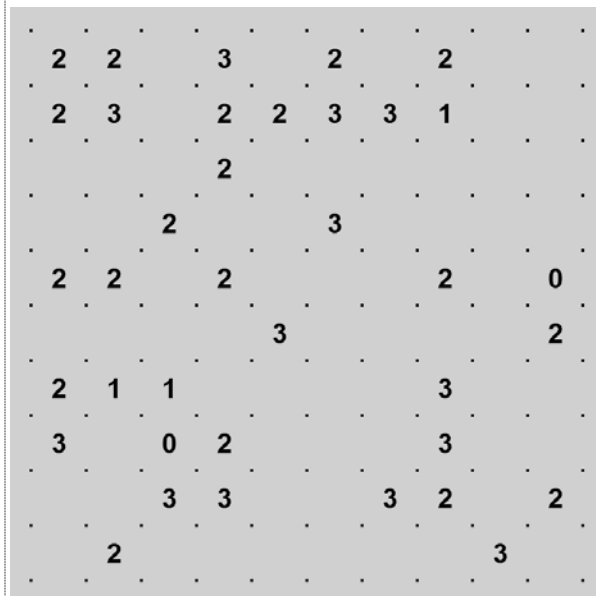
The loop you draw must correctly satisfy all of these clues to be considered a correct solution.

Loopy hints: Mark four 'x's around all zero squares to remind yourself that no line segments can be placed there. Continue by filling in line segments as you work them out, and 'x's between dots that cannot logically have a line segment. For example, adjacent '3' squares will only be able to be filled in a few ways to ensure that the loop can continue without closing in on itself.

Now can you do the easy one on page 2?



Good: let's try a harder one! This puzzle took me quite some time to solve.



Below: answers from yesterday's **Tents** puzzles.

