

Tomorrow's Schedule

Sunday, June 15, 2008

MORNING/AFTERNOON EVENTS:

StratiFlighted Swiss Teams,
Flight A/X..... (3000+ / 0-3000)..... 9:00 & TBA
StratiFlighted Swiss Teams,
Flight B/C/D..... (1000-1500 / 500-1000 / 0-500) ... 9:00 & TBA
Stratified Senior Swiss Teams..... (1500+ / 500-1500 / 0-500) 9:00 & TBA
Stratified Fast Open Pairs (1500+ / 500-1500 / 0-500) 9:00 & TBA

MORNING SINGLE-SESSION EVENT:

Stratified 199er Swiss Teams..... (100-200 / 50-100 / 0-50)9:00

AFTERNOON SINGLE-SESSION EVENT:

Stratified 199er Swiss Teams..... (100-200 / 50-100 / 0-50)1:30

Single session entries accepted for the pair game.

StratiFlighted and Senior Swiss Teams strats are based on team average masterpoints.

199er Swiss Teams strats are based on the level of the highest team member.

Estimated on-the-road time Sunday: 5:30pm.

Watch for the wrap-up issue of *Bridge on the Beach* at www.matchpointer.com
It will include all Sunday results and complete masterpoint lists.



Bridge by the Beach

Saturday Edition

Bridge by the Beach is the Daily Bulletin of the 2008 Penticton Regional — Canada's biggest Regional every year since 2003.



Bridge by the Beach editor:

Bruce McIntyre (Burnaby BC)

e-mail: ooga@shaw.ca

I welcome news, stories, photos, interesting deals, and other material for *Bridge by the Beach*, and I'll print as much as I can—from experts, intermediates and novices alike. I will be available for digital photos of overall winners of any event, or

any bracket or strat within an event, both before the afternoon session and again after the evening session, at the Bulletin office near the northeast entrance (the one on the pairs side of the room).

Each edition of *Bridge by the Beach* (and other recent McBruce Daily Bulletins) is posted online early each morning to this address:

www.matchpointer.com/db.htm

Photos taken for *Bridge by the Beach* are uploaded to the London Drugs Photo Station:

www.londondrugs.com/LDPS

Anyone can view them, download them, or purchase high-quality prints or even gift items with the photos. (The Penticton London Drugs, or any photo shop could do this for you if you have no Internet access.) No login is required; to access the photos, enter this access code: **ZLJ2KXTK7**

Bridge by the Beach

Daily Bulletin of the 2008 Penticton Regional



Today's Schedule

Saturday, June 14, 2008

MORNING EVENTS: **8:45 AM**

Green Grape Compact KO Teams ..(2nd of two sessions)
EARLY BIRD Stratified Side Game Series (#5 of 5)
Stratified 199er Pairs..... (100-200 / 50-100 / 0-50)

TWO-SESSION EVENTS: **1:00, 7:15 PM**

Berry Delight Compact Knockout Teams.... (bracketed)
we forgot to include this event in yesterday's schedule
StratiFlighted Open Pairs,
Flight A/X (3000+ / 0-3000)
StratiFlighted Pairs,
Flight B/C/D (1000-1500 / 500-1000 / 0-500)
Stratified Senior Pairs..... (1500+ / 500-1500 / 0-500)
Prickly Pear Knockout Teams (semi-finals, finals)

AFTERNOON SINGLE-SESSION EVENTS: **1:00 PM**

WEEKEND Stratified Side Game Series..... (#3 of 4)
Stratified 199er Pairs..... (100-200 / 50-100 / 0-50)

EVENING SINGLE-SESSION EVENTS: **7:15 PM**

Stratified Swiss Teams (strats by team average)
WEEKEND Stratified Side Game Series (#4 of 4)
Stratified 199er Pairs..... (100-200 / 50-100 / 0-50)

Newly-begun events are listed above in **boldface**.

Where's my section? Pairs in the carpeted area, teams in the uncarpeted area.

Which lineup? Entries sold inside for team events and morning pair games; near the concession area for afternoon and evening pairs events.

Brain Warmups

Five new kinds of puzzles!

More in our series of puzzles from a wonderful free collection of no less than 27 small programs that you can get at this address:

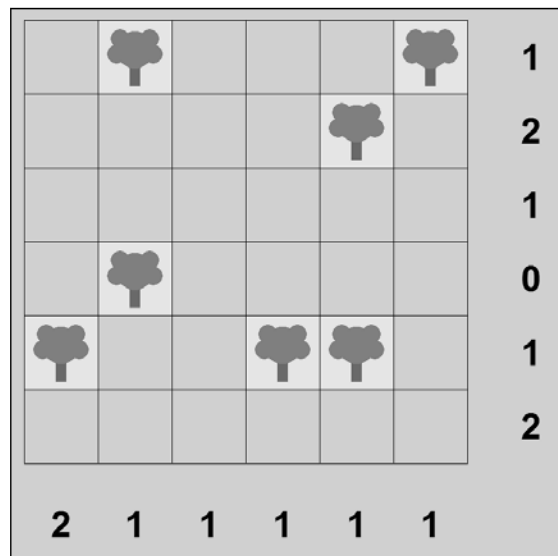
www.chiark.greenend.org.uk/~sgtatham/puzzles/

You'll be able to solve all of these puzzles **without guesswork**, by logical deductions alone. (Isn't that what we're all trying to do at the table? Why take a finesse when you have a 100% line?)

Today's puzzle is called **Tents**. You have a grid of squares, some of which contain trees. Your aim is to place tents in some of the remaining squares, so that the following conditions are met:

- 1) There are exactly as many tents as trees.
- 2) The tents and trees can be matched up in such a way that each tent is directly adjacent (horizontally or vertically, but NOT diagonally) to its own tree. However, a tent may be adjacent to other trees as well as its own.
- 3) No two tents are adjacent horizontally, vertically or even diagonally.
- 4) The number of tents in each row and column matches the numbers given round the sides of the grid.

The easy version is below. Hints on solving and a more difficult version is on page 23. Answers will appear in tomorrow's issue. (Yesterday's puzzles: answers, page 23.)



Tents Hints

Beginner's puzzle on page 2

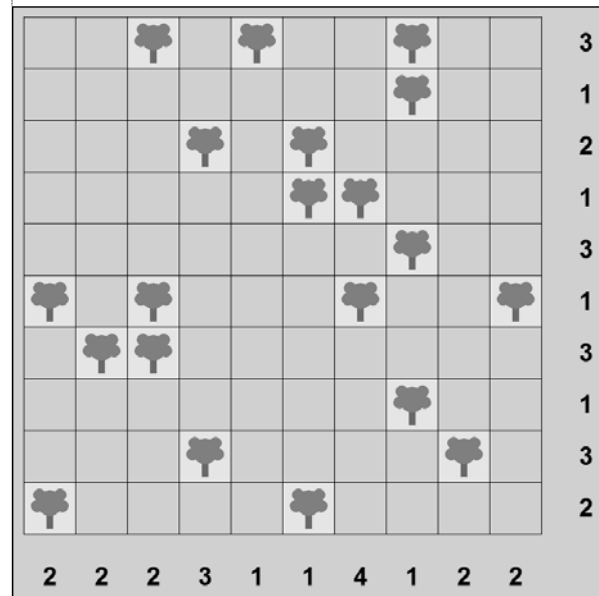
Tents Recap: You have a grid of squares, some of which contain trees. Your aim is to place tents in some of the remaining squares, in such a way that the following conditions are met:

- 1) There are exactly as many tents as trees.
- 2) The tents and trees can be matched up in such a way that each tent is directly adjacent (horizontally or vertically, but NOT diagonally) to its own tree. However, a tent may be adjacent to other trees as well as its own.
- 3) No two tents are adjacent horizontally, vertically or even diagonally.
- 4) The number of tents in each row and column matches the numbers given round the sides of the grid.

Tents hints: First: mark an X in grid squares that cannot contain tents: those in a row or column with a zero, and those that are not horizontally or vertically beside any tree. Second, check for rows and columns that have only the number of tents left as possible tents, fill them in, and X out the surrounding squares. Third, look for trees that have only one possible space left for their corresponding tent. Each time you fill in a tent or X out a square, redo the procedure above, as new insights will pop up.

Now can you do the easy one on page 2?

Good: let's try a harder one! This puzzle took me quite some time to solve.



Good luck! Tomorrow: **Loopy**

Below: answers from yesterday's puzzles.

