

Tomorrow's Schedule

Saturday, June 14, 2008

MORNING EVENTS:

Green Grape Compact Knockout Teams
(second of two sessions) (bracketed, teams of four **only**)8:45
EARLY BIRD Side Game Series (#5 of 5) (1500+ / 500-1500 / 0-500)8:45
Stratified 199er Pairs (100-200 / 50-100 / 0-50)8:45

TWO-SESSION EVENTS (AFTERNOON-EVENING):

StratiFlighted Open Pairs, Flight A/X (3000+ / 0-3000)1:00 & 7:15
StratiFlighted Open Pairs, Flight B/C/D (1000-1500 / 500-1000 / 0-500)1:00 & 7:15
Stratified Senior Pairs (1500+ / 500-1500 / 0-500)1:00 & 7:15
Prickly Pear Knockout Teams
(semi-finals, finals) (bracketed)1:00 & 7:15

AFTERNOON SINGLE-SESSION EVENTS:

WEEKEND Side Game Series (#3 of 4) (1500+ / 500-1500 / 0-500)1:00
Stratified 199er Pairs (100-200 / 50-100 / 0-50)1:00

EVENING SINGLE-SESSION EVENTS:

Stratified Swiss Teams (1500+ / 500-1500 / 0-500)7:15
WEEKEND Side Game Series (#4 of 4) (1500+ / 500-1500 / 0-500)7:15
Stratified 199er Pairs (100-200 / 50-100 / 0-50)7:15



Bridge by the Beach

Friday Edition

Bridge by the Beach is the Daily Bulletin of the **2008 Penticton Regional** — Canada's biggest Regional every year since 2003.



Bridge by the Beach editor:

Bruce McIntyre (Burnaby BC)

e-mail: ooga@shaw.ca

I welcome news, stories, photos, interesting deals, and other material for *Bridge by the Beach*, and I'll print as much as I can—from experts, intermediates and novices alike. I will be available for digital photos of overall winners of any event, or

any bracket or strat within an event, both before the afternoon session and again after the evening session, at the Bulletin office near the northeast entrance (the one on the pairs side of the room).

Each edition of *Bridge by the Beach* (and other recent McBruce Daily Bulletins) is posted online early each morning to this address:

www.matchpointer.com/db.htm

Photos taken for *Bridge by the Beach* are uploaded to the London Drugs Photo Station:

www.londondrugs.com/LDPS

Anyone can view them, download them, or purchase high-quality prints or even gift items with the photos. (The Penticton London Drugs, or any photo shop could do this for you if you have no Internet access.) No login is required; to access the photos, enter this access code: **ZLJ2KXTK7**

Bridge by the Beach

Daily Bulletin of the 2008 Penticton Regional



Today's Schedule

Friday, June 13, 2008

MORNING EVENTS:

8:45 AM

Green Grape Compact KO Teams....(first of two sessions)
(bracketed, teams of four only, concludes Sat. morning)
Early Bird Stratified Side Game Series (#4 of 5)
Stratified 199er Pairs..... (100-200 / 50-100 / 0-50)

TWO-SESSION EVENTS:

1:00, 7:15 PM

Stratified Open Pairs..... (1500+ / 500-1500 / 0-500)
Stratified Senior Pairs..... (1500+ / 500-1500 / 0-500)
Apricot Brandy Knockout Teams..... (semi-finals, finals)
Prickly Pear Knockout Teams (first and second
of four sessions, continues tomorrow afternoon – evening)

AFTERNOON SINGLE-SESSION EVENTS:

1:00 PM

Weekend Stratified Side Game Series..... (#1 of 4)
Stratified 199er Pairs..... (100-200 / 50-100 / 0-50)

EVENING SINGLE-SESSION EVENTS:

7:15 PM

Stratified Swiss Teams (strats by team average)
Weekend Stratified Side Game Series (#2 of 4)
Stratified 199er Pairs..... (100-200 / 50-100 / 0-50)

*Elvis visits the Penticton Regional
tonight after the evening session*

Newly-begun events are listed above in **boldface**.

Where's my section? Pairs in the carpeted area, teams in the uncarpeted area.

Which lineup? Entries sold inside for team events and morning pair games; near the concession area for afternoon and evening pairs events.

Brain Warmups

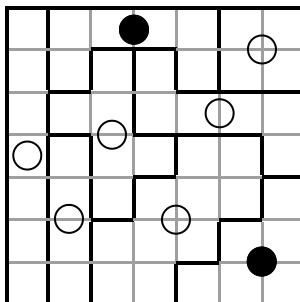
Five new kinds of puzzles!

More in our series of puzzles from a wonderful free collection of no less than 27 small programs that you can get at this address:

www.chiark.greenend.org.uk/~sgtatham/puzzles/

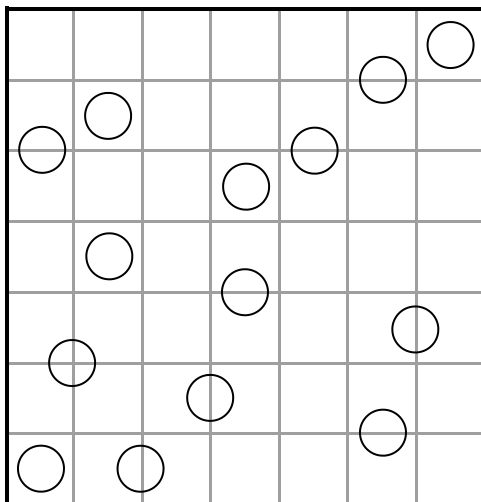
You'll be able to solve all of these puzzles **without guesswork**, by logical deductions alone. (Isn't that what we're all trying to do at the table? Why take a finesse when you have a 100% line?)

Today's puzzle is called **Galaxies**. You have a rectangular grid containing a number of dots. Your aim is to draw edges along the grid lines which divide the rectangle into regions in such a way that every region is 180° rotationally symmetric, and contains exactly one dot which is located at its centre of symmetry. The grid at the right has symmetrically "correct" (white dot) and "incorrect" (black dot) shapes to give you the idea. See page 23 for a further explanation of the concept.



When you're done, every square in the grid will belong to a region claimed by one of the dots.

The easy version is below. Hints on solving and a more difficult version is on page 23. Answers will appear in tomorrow's issue. (Yesterday's puzzles: answers, page 6.)



Galaxies Hints

Beginner's puzzle on page 2

Galaxies Recap: draw edges along the grid lines which divide the rectangle into regions in such a way that every region is 180° rotationally symmetric, and contains exactly one dot which is located at its centre of symmetry. '180° rotationally symmetric' means that every grid square added to the 1, 2, or 4 grid squares that each dot initially covers requires that you add another square at the other end of the dot's area, the same distance from the dot, in the opposite direction.

Galaxies hints: The key to solving these puzzles is to work out, usually from the corners and sides inward, which segments of the walls (the borderlines between shapes) you can fill in. The outside of the grid is all part of the walls of some of the shapes. Any time you can determine that a grid square belongs to a shape, there are usually a few wall segments you can fill in, mirror images of the edge wall segments or other ones you have previously determined.

Now can you do the easy one on page 2?



District 19 News

Board Actions from Penticton

Synopsis of the District Board meeting Monday, courtesy of District Secretary **Dudley Brown**:

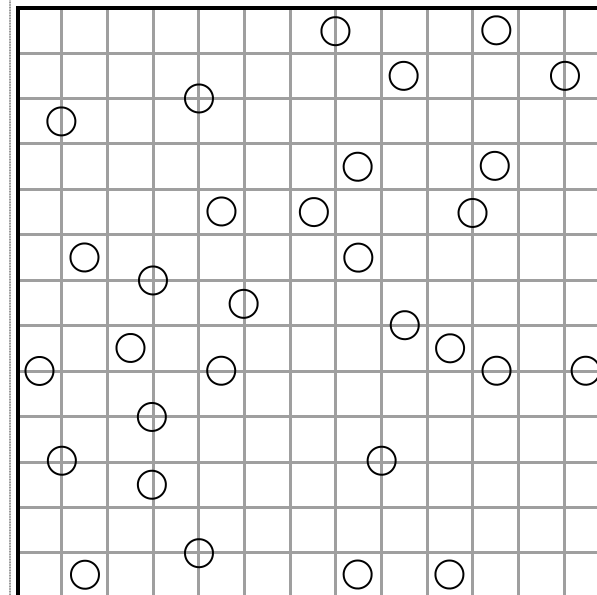
The Board ratified the appointment of **Matt Koltnow** as District 19 Tournament Coordinator to replace **Roger Putnam**, who resigned as of 1 July 2008.

The Treasurer's report indicated that the District had adequate reserves to cover anticipated shortfalls in income this year. In light of these shortfalls Regional entry fees for the remainder of 2008 are set at \$12.50 per session in the currency of the country of the tournament.

Youth entry fees are to remain at \$1.00 per session and Junior entry fees will receive a \$5.00 discount per session.

A bylaw amendment was approved to District

Good: let's try a harder one! This puzzle took me quite some time to solve.



election procedures.

The 2011 Eastern Washington Regional was awarded to Tri-Cities, October 10-16.

The District is searching for a charitable organization to receive the District's share of the Educational Foundation's major grant the year. It is hoped to go to an organization in which the grant would make the District the major sponsor of a charitable fundraising event and garner the District recognition.

The Board considered the Parksville Unit request to add a second District Board position for Vancouver Island but decided to take no action pending a complete review of District Board positions.

The Victoria Regional Committee was granted a \$1,000 budget for the Intermediate/Newcomer and Goodwill reception for the 2009 Victoria Regional.